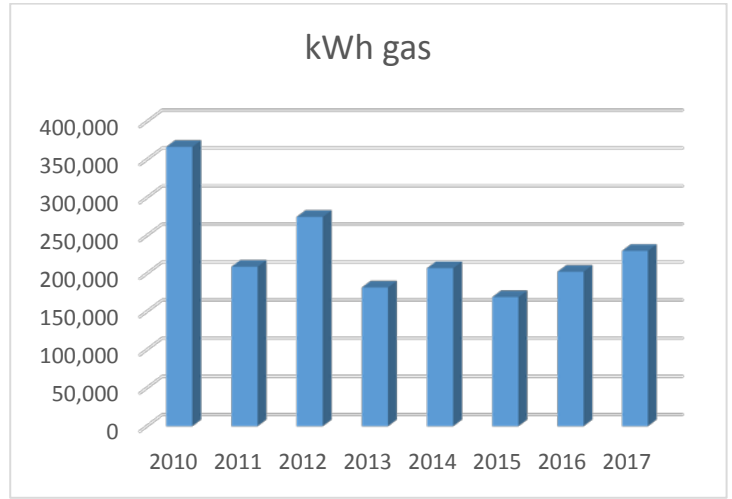
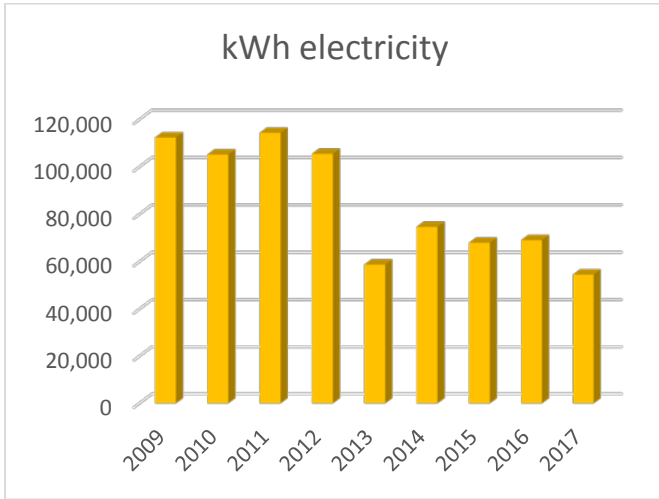


SJP energy use summary to 2017



Year	Electricity costs			Savings against 2009 baseline		
	£	kWh*	CO ₂ e**	£	kWh	CO ₂ e
2009	12,783	112,349	58,938			
2010	10,936	105,187	55,181	1,847	7,162	3,757
2011	13,029	114,334	59,979	246 (inc)	1,975	1,040
2012	14,912	105,492	55,341	2,129 (inc)	6,857	3,598
2013	7,062	58,757	30,824	5,721	53,892	28,272
2014	10,328	746,86	39,255	2,455	37,663	19,758
2015	7,513	67,960	35,652	5,270	44,389	23,331
Totals				12,918	147,988	77,634

Year	Gas costs			Savings against 2010 baseline		
	£	kWh	CO ₂ e	£	kWh	CO ₂ e
2009	28,826^	323,761	59,442			
2010	16,709	366,820	67,348			
2011	10,731^^	209,128	38,395	5,978	157,692	28,953
2012	16,542	274,701	50,435	164	92,119	16,913
2013	9,332	181,817	33,381	7,377	185,003	33,967
2014	8,273	207,286	38,057	8,436	159,534	29,291
2015	6,593	169,146	31,055	10,116	197,674	36,293
Totals				32,071	792,022	145,417